



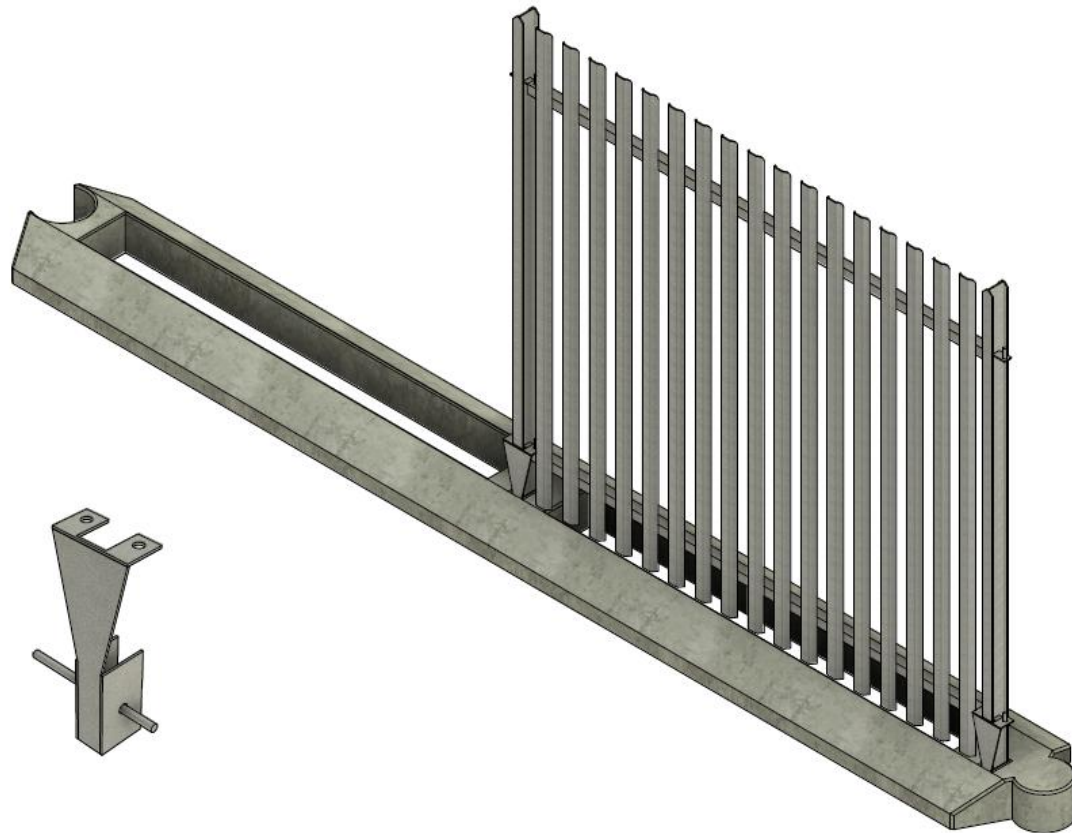
Modufence®

Performance you can depend on

SMARTRAFT®

MODULAR HIGHWAY SOLUTIONS

Work Smarter Not Harder with Smarcraft®
Modufence®



Modufence® is **rapidly** deployable, modular fencing system installed on an off-site pre-fabricated, modular concrete foundation to allow for a safe, quick, efficient fencing installations. Foundation depths required for installation can be just 200mm or even placed on even ground surfaces without the need for excavation. So problematic services, underground structures other ground obstructions can all be overcome with this one simple solution. Modufence® can be installed in any standard ground conditions. On prepared ground, installation outputs of 75m+ per hour can be achieved and is up to 20 times quicker than traditional installation methods reducing the time spent on site, the number of mobilisations and site visits required.

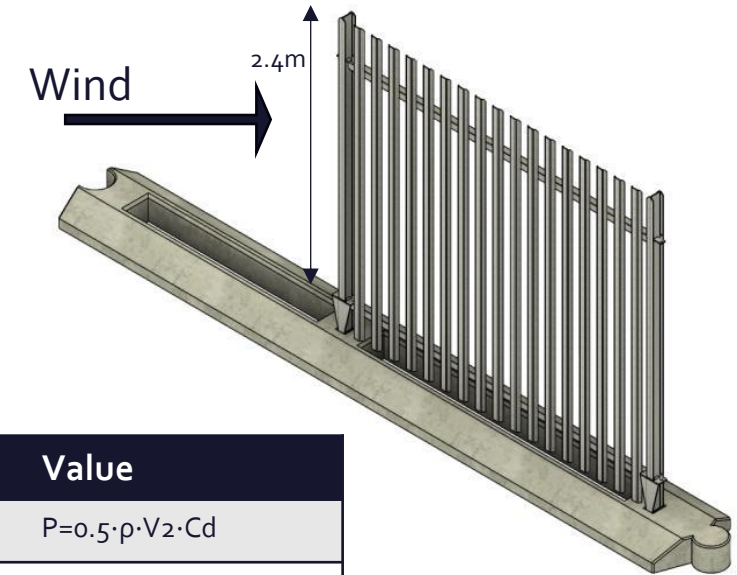
SMARTRAFT[®]

MODULAR HIGHWAY SOLUTIONS

Work Smarter Not Harder with Smarcraft[®]

Features

- Can be safely installed over and in close proximity to underground drainage & services whilst still maintaining access.
- Faster, more efficient and safer installation compared to traditional methods.
- Permanent or Temporary solution.
- Compatible with many fence systems.
- Reduced carbon footprint.
- Project cost & program certainty.
- Wind Loading calculations available.
- Compatible with Single & double leaf gates.



| PARAMETER | Value |
|------------------------|-------------------------------------|
| Wind pressure formula | $P=0.5 \cdot p \cdot V^2 \cdot C_d$ |
| Effective project area | 3.3 m ² |
| Force on Fence bay | 12.79kN |

SMARTRAFT[®] MODULAR HIGHWAY SOLUTIONS

Work Smarter Not harder with Smarcraft[®]

Dimensions

700mm wide, 200mm deep, length to be determined by fencing system

Weight

Circa 160kg / linear meter

Radius & 90-degree

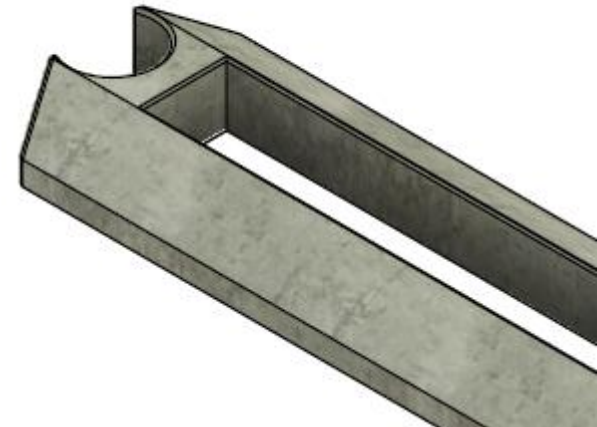
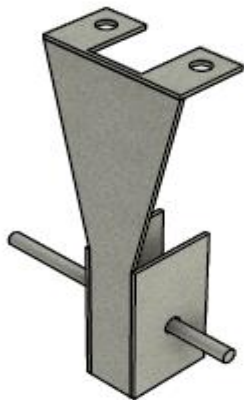
Suitable for changes in direction

Wind Loadings

Compliant to standards

Installation Method

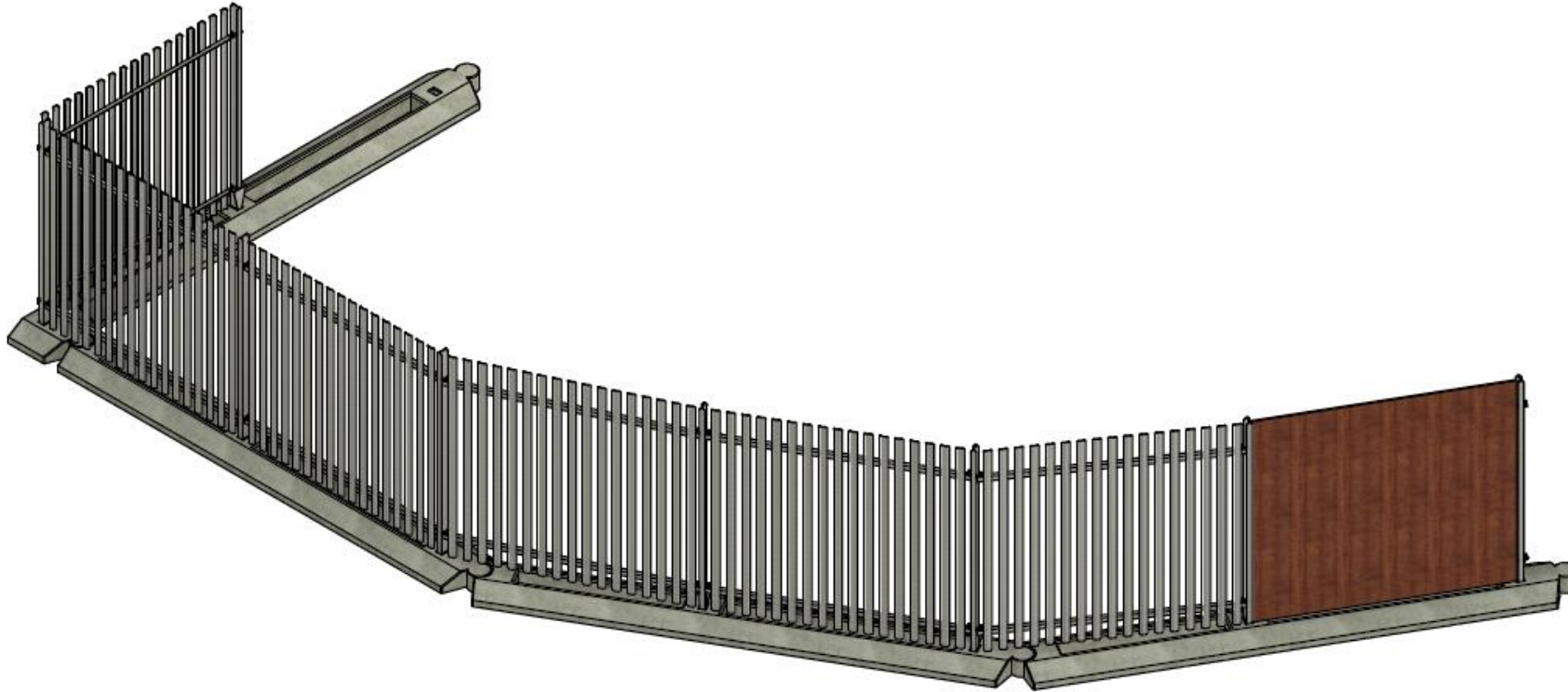
With any suitable lifting device utilising Smarcraft installation cradle



SMARTRAFT®

MODULAR HIGHWAY SOLUTIONS

Work Smarter Not harder with Smarcraft®



Ease of installation

- **Rapid** deployment
- **Rapid** installation
- **Rapid** relocation
- Modufence foundation can be placed in or on the ground
- Minimal excavation $\leq 200\text{mm}$
- Reduced HSEQ risks due to shallow foundation
- Speed of installation 75m/hour
- Additional non bolted wind stays available

Compatible with

- Palisade, close board, chain-link, hoarding, bow top, single and double leaf gates, **plus** many more.

Temporary to permanent solution

- Panels types interchangeable when moved from temporary to permanent
- Improved efficiency & sustainability
- Reduced Carbon footprint
- Reduced project costs



Modufence®

Performance you can depend on